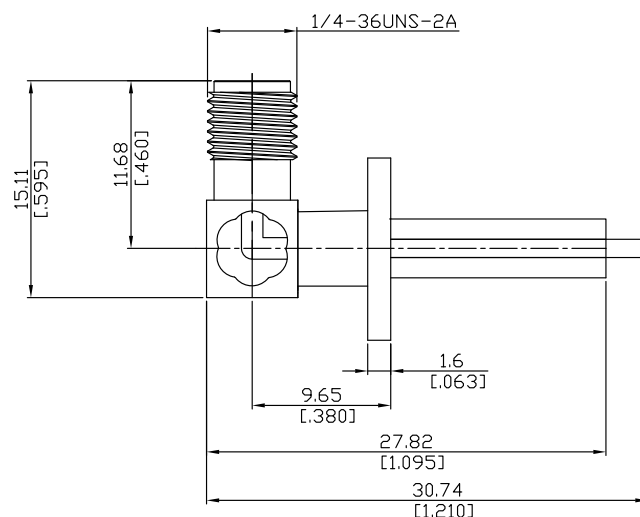
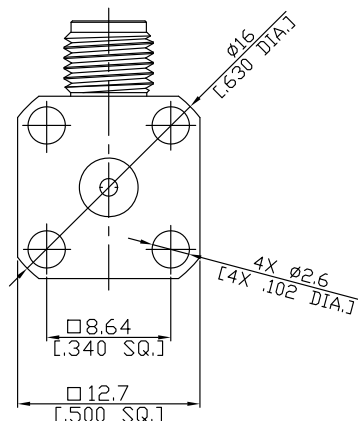



**SMA Right Angle Panel Receptacle Jack  
(Coaxial End)**
**SMA2GFA59-1791A/91**


All dimensions are in mm [inch]

Tolerances according to DIN ISO 2768-mH

**Interface**

According to MIL-C-39012; MIL-STD-348A/310

**Electrical Data**

 Impedance 50  $\Omega$   
 Frequency DC to 18 GHz

**Mechanical Data**

 Coupling mechanisms Screw-lock  
 Weight 0.0052 kg

**Environmental Data**

 Temperature range -65°C to +165°C  
 RoHS compliant

**Material And Plating**

| Piece Parts    | Material         | Plating                          |
|----------------|------------------|----------------------------------|
| Centre contact | Beryllium Copper | Gold plating(Nickel underplated) |
| Body           | Brass            | Gold plating(Nickel underplated) |
| Insulator      | PTFE             |                                  |

**Packing**

Single or 100

**Related Document**

Mounting Dimension MD71